



**Riverside County
Regional Park & Open-Space
Historical Commission Meeting**



Riverside City Hall, 5th Floor
3900 Main Street
Riverside, CA 92501

**Park District
Headquarters
4600 Crestmore Road
Jurupa Valley, CA 9250
951/255-9513**

Thursday, September 21, 2023, 1:30 p.m.

A G E N D A

HISTORICAL COMMISSION MEETING - 1:30 PM

1.0 Call to Order

2.0 Pledge of Allegiance to the Flag

3.0 Roll Call

4.0 Approval of Minutes – Action

Job Code: 2023-06

Approval of Minutes of August 10, 2023.

5.0 Special Recognition – Informational

5.1 Welcome New Commissioners

Joyce Ann Hohenadl, Appointed to District 2

Supervisor Karen Spiegel reappointed Joyce Hohenadl to the Historical Commission on August 29, 2023.

Deborah L. Newton, Appointed to District 1

Supervisor Kevin Jeffries appointed Deborah L. Newton to the Historical Commission on August 29, 2023.

6.0 Public Comments Related to Historical Commission

*A three-minute limitation will apply to each member of the public who wishes to address the Commission on a matter not on the agenda. No member of the public is allowed to “share” his/her three minutes with any other member of the public. (Usually, any items received under this heading are referred to staff for further study, research, completion and/or future Commission action.) Any person wishing to address the Commission on any matter, whether or not it appears on this agenda, is requested to complete a **Request to Speak form** available from the Recording Secretary. The completed form is to be submitted to the Secretary prior to an individual being heard. Whenever possible, lengthy testimony should be presented to the Commission in writing and only pertinent points presented orally.*



If you require reasonable accommodations for this meeting,
call Park District Headquarters at 951-255-9513 at least 72 hours before the meeting.

7.0 Old Business

7.1 Landmark Nomination HC-2023-001 (Continued Item From 8/10/2023) – Action Job Code: 2023-04

Proposal by Joyce Hohendahl to consider a Riverside County Landmark for the structure Chapel of Memories located at 28300 Mercedes Street, Temecula, CA (APNs 921-070-032 and 921-070-031) in District 3. The Riverside County Regional Park and Open Space District recommends that the Historical Commission recommend that the Board of Supervisors determine that this proposal is exempt from the California Environmental Quality Act (CEQA), pursuant to Sections 15061(b)(3) (Common Sense Rule) as this proposal will not have a significant effect on the environment.

7.2 Landmark Nomination HC-2023-002 (Continued Item From 8/10/2023) – Action Job Code: 2023-05

Staff is requesting further continuance. Proposal for the proposal by Mike McCarthy of Riverside Neighbors Opposing Warehouses (R-NOW) to consider a Riverside County Historic District for the March Weapons Storage Area (WSA) located on APNs 297-090-001, 297-090-010, and 297-090-021 in District 1. The Riverside County Regional Park and Open Space District recommends that the Historical Commission recommend that the Board of Supervisors determine that this proposal is exempt from the California Environmental Quality Act (CEQA), pursuant to Sections 15061(b)(3) (Common Sense Rule) as this proposal will not have a significant effect on the environment.

8.0 New Business

8.1 New Calendar – Action

Job Code: 2023-07

Historical Commissioners to review and approve new calendar.

9.0 Tentative Future Agenda Items

Opportunity for the members of the Historical Commission to request future agenda items.

10.0 Historic Preservation Officer Updates – Informational

10.1 Future Workshop

HPO proposes a future workshop meeting focused on the Brown Act and existing bylaws.

10.2 Riverside County Historic Preservation Guidance Documents and Historical Commission Bylaws

HPO to discuss goals to update Historical Commission bylaws, Ordinance 578 (Ordinance Governing the Establishment of Historic Preservation Districts and Regulating Activities Therin), Riverside County Historical Landmarks Criteria & Procedures, and the Riverside County Historical Landmark Nomination Form.

10.3 Historical Commission Website

HPO to discuss recent changes to website and proposed updates.

11.0 Next Meeting

Thursday, November 16, 2023, at 1:30 p.m. Parks HQ, 4600 Crestmore Rd, Riverside, CA

12.0 Adjournment



If you require reasonable accommodations for this meeting,
call Park District Headquarters at 951-255-9513 at least 72 hours before the meeting.



Riverside County
Regional Park & Open-Space
Historical Commission Meeting

Thursday, August 10, 2023 1:30 p.m.

Gilman Historic Ranch
1901 W. Wilson Street
Banning, CA 92220



Park District
Headquarters
4600 Crestmore Road
Jurupa Valley, CA 92501
951/255-9513

SPECIAL MEETING

MINUTES

1.0 Workshop/Study Session – None

HISTORICAL COMMISSION MEETING

1.0 Call to Order

The meeting was called to order at 1:38 p.m.

2.0 Pledge of Allegiance to the Flag – The Pledge of Allegiance was led by Commissioner Williamson.

3.0 Roll Call: Commissioners Present: Williamson (II), Falcone (I), Chair Hohenadl (I), Vice-Chair Lech (V), Deutsch (III), Martland (III), Jarrell Johnson (MAL); **Absent:** None ; **Staff Present:** Adame and Lawlor.

4.0 Approval of Minutes – Action

May, 2022 approved. (M/S/C Jarrell Johnson/Martland)

5.0 Special Recognition – Informational

5.1 Welcome New Chief of Planning, Development, and Interpretation, Gaby Adame
Lawlor introduced Chief Adame

5.2 Welcome New Commissioner

Lawlor introduced the new Historic Commissioner for District I, Philip Falcone

5.3 Welcome New Commissioner

Lawlor introduced the new Historic Commissioner for District III, Stacia Deutsch

6.0 Public Comments Related to Historical Commission – None

7.0 Subcommittee Reports-- None

8.0 Old Business

8.1 Updated 2023 Meeting Locations – Action

Bridget Lawlor, Historic Preservation Officer

Job Code 2020-08

(M/S/C Falcone/Jarrell Johnson)

The Commissioners voted for the next meeting to take place at Parks Headquarters.

8.2 History Organizations Calendar—Informational

Vice Chair Lech revisited the idea of having a county wide calendar for historical events that lives on the RivCoParks website. Chief Adame suggested that when the new Public Information Specialist is in place, then they can work on making this a reality. |

9.0 New Business

9.1 Seeking New Commissioners—Informational

HPO Lawlor updated the Commission that we still have vacancies in District IV (2) and District V (1).

9.2 Election of Chair of the Historical Commission for 2023/24—Action

Job Code: 2023-01

Vice Chair Lech was nominated for Chair. *(M/S/C Falcone/Jarrell Johnson)*

9.3 Election of Vice Chair of the Historical Commission for 2023/24—Action

Job Code: 2023-01

Jarrell Johnson nominated for Vice Chair *(M/S/C Falcone/Lech)*

9.4 Board Resolution for Commemoration of Commissioner Ruth Atkins—Action

Job Code: 2023-03

Vice Chair Lech moved to for a continuation, so the Commission has a chance to review the commemoration policy. *(M/S/C Lech/Jarrell Johnson)*

9.5 County Landmark Nomination: Chapel of Memories—Action

Job Code: 2023-04

Martland motioned to approve with conditions and bring to September 21st meeting for final approval with updated report that includes facts and findings. *(M/S/C Martland/Deutsch)*

9.6 County Landmark Nomination: March Weapons Storage Area (WSA)—Action

Job Code: 2023-05

Jarrell Johnson requested more information and motioned for a continuation until the Commissioners received more information regarding nomination. *(M/S/C Jarrell Johnson/Deutsch)* |

10.0 Tentative Future Agenda Items

10.1 Approval of Landmark Applications—Action

Revisions and updates will be made on Chapel of Memories and March Weapons Storage Area applications and brought back to the Commission on September 21st. |

11.0 Commissioners Report – Informational

Individual Commissioner report on events happening within their districts.

12.0 Next Meeting

September 21, 2023, 1:30 p.m. location Parks Headquarters 4600 Crestmore Road Jurupa Valley 92509. |

13.0 Adjournment

Meeting adjourned at 2:56 p.m.

Bridget Lawlor

Bridget Lawlor
Historic Preservation Officer



Riverside County Regional Park and Open-Space District


Kyla Brown, Parks Director / General Manager

HISTORICAL COMMISSION MEETING

DATE: SEPTEMBER 21, 2023

AGENDA ITEM NO.: 7.1

PROPOSED PROJECT

Case Numbers	HC-2023-001
Request	To consider a Landmark Designation request to designate the Chapel of Memories as a County Historic Landmark.
Applicant	Joyce Hohenadl
Nomination Location	<p>28300 Mercedes Street, Temecula, CA 92590 North side of Mercedes Street within Sam Hicks Monument Park</p> 
Historic District	Not Applicable
Historic Designation	RIV-082 (Subject to vote)
Staff	<p>Dr. Bridget Lawlor, Historic Preservation Officer 951-529-2361 blawlor@rivco.org</p>



RECOMMENDATIONS

Staff recommends that the Historical Commission recommend that the Board of Supervisors:

1. **DETERMINE** that Landmark Application HC-2023-001 for the designation of the Chapel of Memories as a Riverside County Landmark is categorically exempt from the California Environmental Quality Act (CEQA) pursuant to Sections 15061(b)(3) (Common Sense Rule) and 15308 (Actions by Regulatory Agencies for Protection of the Environment), as the proposal will have no significant effect on the environment, identifies the structure as a cultural resource, and preserves the historic character of a cultural resource; and
2. **APPROVE** Historic Landmark Application HC-2023-001 based on the facts of findings, and designate the Chapel of Memories as a Riverside County Historic Landmark.

BACKGROUND

The Chapel of Memories

The Chapel of Memories (St. Catherine of Alexandra Catholic Church) is a simple American Colonial architecture style church located at 28300 Mercedes Street (Exhibit 1). St. Catherine of Alexandra Catholic Church began as a mission church of the San Luis Rey Mission for the areas of San Jacinto, Lake Elsinore, and Pala. The construction of this structure was spurred by need for a physical space to conduct Catholic mass for the St. Catherine of Alexandra Catholic Church in Temecula. The citizens of the town pulled together to raise the funds necessary through donations, volunteer labor, and a community fundraiser at Vail Ranch. Six town lots were secured on the corner of Front and Sixth Streets. The parish priest during the time of construction, Father John J. Burri, informed parishioners that the new structure would be a “frame building 26’x36’ with a sanctuary 12’x12’ and a vestry of 10’x12’.” Contractor R.J. Smith began construction of the church on February 9, 1917 and the structure was complete on March 30, 1917.

The structure served the Catholic community for over 70 years. Over the years, the church added portable additions to serve the growing population, however, it was not sufficient. The community eventually outgrew the building and built a larger facility on C Street and Santiago. For several years after the completion of the new church, the building was used for classrooms and administrative functions. Eventually, the structure became vacant and slated for demolition to make way for commercial growth on Front Street. In order to avoid demolition, the structure was sold and purchased for \$1 by Tony and Mildred Tobin who donated it to the Temecula Museum Society. In May 1989, the building was moved to its current location in Sam Hicks Monument. The building is still in use as a wedding and special events chapel.

American Colonial Architecture

Early American colonial churches reflected architectural styles from Europe, adapted to the new materials and conditions in North America. Most early churches were fairly modest wooden buildings in the Georgian or Federal styles. More elaborate churches in the cities and towns might be built of stone or brick and have Georgian, Federal, or even Gothic inspired designs. Some identifying features of Wood frame construction with clapboard siding was common, though later churches might use stone or brick. Styles like Georgian and Federal were symmetrical and simple, with restrained classical details like columns, pilasters, arches and pediments. Towers or steeples were often present, sometimes with a row

of columns or pilasters Entryways usually had a pedimented portico or columned porch in styles like Greek Revival. The overall form and details reflect both European influence and adaptation to colonial life.

Growth of Catholicism in Temecula

The growth of Catholicism in Temecula is intertwined with the broader history of Catholicism in California, which dates back to the Spanish colonial period in the late 18th century. Below is a brief history of the growth of Catholicism in Temecula:

- **Spanish Missions:** Catholicism was first introduced to California by Spanish missionaries who established a series of missions along the coast, beginning in the late 18th century. These missions served as centers for religious and agricultural activities. While Temecula itself was not the site of a mission, it was located in the broader region influenced by the missions.
- **Mexican Secularization:** In the early 19th century, Mexico gained independence from Spain, and the Mexican government enacted secularization laws that led to the secularization and eventual abandonment of many mission. This period saw a decline in the influence of the Catholic Church in California, including the Temecula area.
- **American Period:** In the mid-19th century, California became part of the United States following the Mexican-American War. During this time, the Catholic Church began to reestablish its presence in the state.
- **Local Catholic Community:** The growth of Temecula as a town in the late 19th and early 20th centuries brought an influx of residents, including Catholic families. Local Catholics initially attended Mass in private homes or at temporary facilities.
- **St. Catherine's Catholic Church:** In 1917, St. Catherine's Catholic Church was founded in Temecula. This marked a significant milestone in the growth of the Catholic community in the area. The church provided a permanent place of worship for the local Catholics.
- **Continues Growth:** As Temecula's population continued to grow in the 20th century, so did the Catholic community. New churches, schools, and other institutions were established to accommodate the needs of the expanding Catholic population.
- **Modern Era:** Today, Temecula has several Catholic churches, including St. Catherine's and St. Jeanne de Lestonnac, serving the spiritual needs of the community. The Diocese of San Bernardino encompasses the Temecula area, and the Catholic faith remains an important part of the city's religious and cultural landscape.

The growth of Catholicism in Temecula, like in many other parts of California, reflects the historical and demographic changes in the region, from its Spanish colonial roots to its modern, diverse community. The Catholic Church has played a significant role in providing spiritual guidance and community support throughout Temecula's history.

ANALYSIS

The applicant has provided a statement of significance, photographs documenting the architecture and building setting, and copies of primary and secondary sources as summarized below (Exhibit 2). The applicant has also provided owner consent to move forward with the landmark application and designation.

Architectural Description

The Chapel of Memories is situated on the north side of Mercedes Street within Sam Hicks Monument Park in Temecula. The chapel is a modest structure featuring a low pitched gabled roof, rectangular layout, a portico, steeple with bell opening, and wood siding. The southern façade, which is the location of the primary entryway, has a double door entrance with simple casing. The western and eastern façades both feature four windows, three that are glass stained windows in wooden casing and a single window with clear glazing. The southern façade features a wider façade from the northern.

Statement of Significance

The Chapel of Memories is historically significant because it is an excellent example of American Colonial architecture in the County. The chapel is also significant as it holds historical and cultural importance as a cornerstone of the local Catholic community.

The Chapel of Memories retains a high degree of integrity required for Landmark designation.

HISTORIC LANDMARK NOMINATION EVALUATION

Per the Riverside County Landmarks Criteria and Procedures, “historic resource” means: “an object, building, structure, site, monument, landmark, area, or place that is significant in terms of architectural, engineering, scientific, economic, agricultural, educational, social, archaeological, military, or cultural history.” Pursuant to the applicable historic resource eligibility criteria, the Chapel of Memories is eligible for designation under Criterion B.2.2 and B.2.3 based on the following facts:

FINDING: Criterion B.2.2: Is associated with the lives of persons important to the history of Riverside County or its communities.

FACTS: The Chapel of Memories (St. Catherine of Alexandria Catholic Church) is associated with the San Luis Rey mission history of the area and representative of the population growth of the area— consisting largely of peoples of the Catholic faith.

FINDING: Criterion B.2.3: Embodies the distinctive characteristics of a type, period, Riverside County region, or method of construction, or represents the work of an important creative individual or possesses high artistic value.

FACTS: The Chapel of Memories (St. Catherine of Alexandria Catholic Church) is characteristic of the American Colonial architectural style. It is one of the few examples in the region of American Colonial churches that exhibits minor alterations to the structure.

PUBLIC NOTICE AND COMMENTS

A public hearing notice was posted to the Riverside County Regional Park and Open-Space District website and posted outside the meeting site 72 hours prior to the meeting per the Brown Act.

EXHIBITS LIST

1. Aerial/Location Map
2. Historic Designation Application
3. Current Photos

Prepared by: Bridget Lawlor, Historic Preservation Officer

Reviewed by: Gaby Adame, Bureau Chief of Planning, Development, and Interpretation

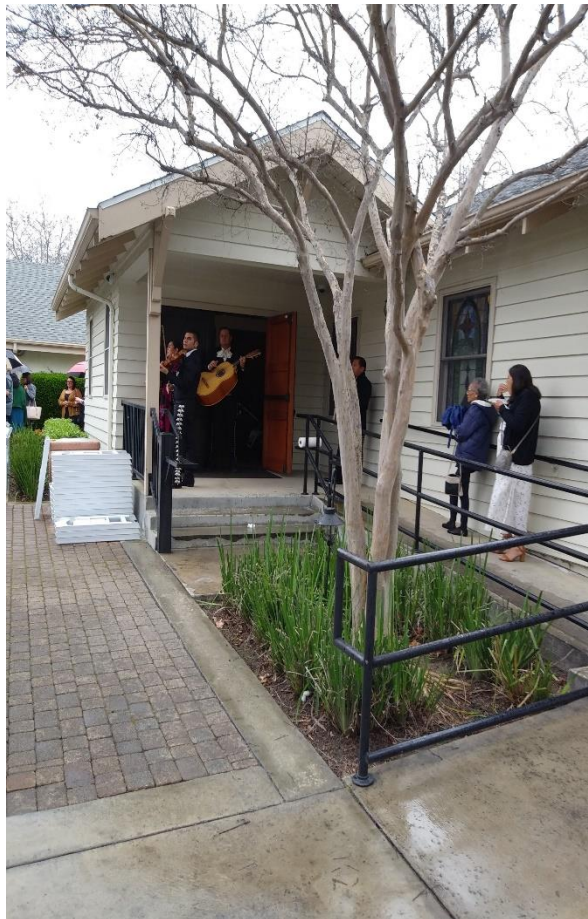
Exhibit 1 Aerial/Location Map



Exhibit 3 Current Photos



Exhibit 3 (Continued)





Landmark Designation: The Chapel of Memories

**Historical Commission
Agenda Item:
September 21, 2023**



Riverside County Regional Park and Open-Space District

Camping ● Trails ● Nature Centers ● Ecological Reserves ● Historic Sites

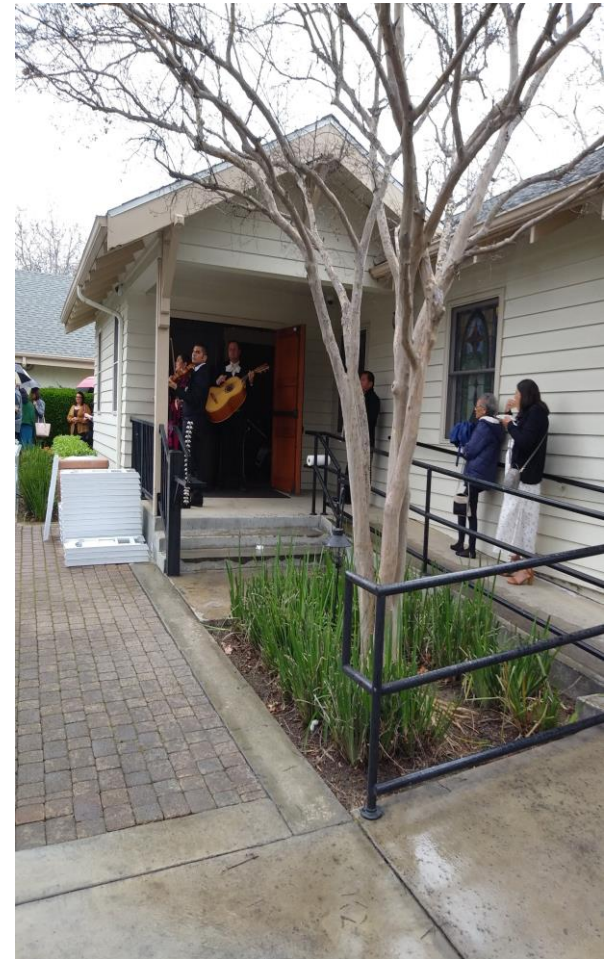
Aerial Photo/Location



The Chapel of Memories



The Chapel of Memories



Recommendation



Staff recommends that the Historical Commission recommend that the Board of Supervisors:

1. DETERMINE that Landmark Application HC-2023-001 for the designation of the Chapel of Memories as a Riverside County Landmark is categorically exempt from the California Environmental Quality Act (CEQA) pursuant to Sections 15061(b)(3) (Common Sense Rule) and 15308 (Actions by Regulatory Agencies for Protection of the Environment), as the proposal will have no significant effect on the environment, identifies the structure as a cultural resource, and preserves the historic character of a cultural resource; and
2. APPROVE Historic Landmark Application HC-2023-001 based on the facts of findings and designate the Chapel of Memories as a Riverside County Historic Landmark.

Statement of Significance

The Chapel of Memories is historically significant because it holds historical and cultural importance as a cornerstone of the local Catholic community.

The growth of Catholicism in Temecula is intertwined with the broader history of Catholicism in California, which dates back to the Spanish colonial period in the late 18th century. Below is a brief history of the growth of Catholicism in Temecula:

- **Spanish Missions:** Catholicism was first introduced to California by Spanish missionaries who established a series of missions along the coast, beginning in the late 18th century. These missions served as centers for religious and agricultural activities. While Temecula itself was not the site of a mission, it was located in the broader region influenced by the missions.
- **Mexican Secularization:** In the early 19th century, Mexico gained independence from Spain, and the Mexican government enacted secularization laws that led to the secularization and eventual abandonment of many mission. This period saw a decline in the influence of the Catholic Church in California, including the Temecula area.
- **American Period:** In the mid-19th century, California became part of the United States following the Mexican-American War. During this time, the Catholic Church began to reestablish its presence in the state.
- **Local Catholic Community:** The growth of Temecula as a town in the late 19th and early 20th centuries brought an influx of residents, including Catholic families. Local Catholics initially attended Mass in private homes or at temporary facilities.
- **St. Catherine's Catholic Church:** In 1917, St. Catherine's Catholic Church was founded in Temecula. This marked a significant milestone in the growth of the Catholic community in the area. The church provided a permanent place of worship for the local Catholics.
- **Continues Growth:** As Temecula's population continued to grow in the 20th century, so did the Catholic community. New churches, schools, and other institutions were established to accommodate the needs of the expanding Catholic population.
- **Modern Era:** Today, Temecula has several Catholic churches, including St. Catherine's and St. Jeanne de Lestonnac, serving the spiritual needs of the community. The Diocese of San Bernardino encompasses the Temecula area, and the Catholic faith remains an important part of the city's religious and cultural landscape.

The growth of Catholicism in Temecula, like in many other parts of California, reflects the historical and demographic changes in the region, from its Spanish colonial roots to its modern, diverse community. The Catholic Church has played a significant role in providing spiritual guidance and community support throughout Temecula's history.



RIVERSIDE COUNTY HISTORICAL COMMISSION HISTORIC LANDMARK NOMINATION FORM

<i>For Historical Commission Use Only</i>		
Date Reviewed: _____		
Commission Recommendation:		
<input type="checkbox"/> Recommend Approval	<input type="checkbox"/> Eligible but Not Listed	<input type="checkbox"/> Disapproved

This form must be used to nominate any pre-historic or historic site in Riverside County for designation as a County Historic Landmark. Information provided will serve as the basis for Historical Commission evaluation and recommendation to the Board of Supervisors. All nominations for this designation must be approved by the Board.

Please fill out and send to:

Riverside County Historical Commission
c/o County Historic Preservation Officer
Riverside County Parks District
4600 Crestmore Road, Riverside, CA 92509-6858.

*Please type your answers. An e-mail version of this form is available upon request.
(951) 955-4310.*

1. SITE NAME:

Historic St. Catherine of Alexandria Catholic Church

Common Chapel of Memories

2. LOCATION:

(a) Address 28300 Mercedes St., Temecula, CA 92590

(b) Vicinity of Mercedes and Front St.

3. LEGAL OWNER:

(a) Name City of Temecula

(b) Address 41000 Main St., Temecula, CA Zip 92590

(c) Contact Number(s) if known: 951-694-6444

(d) Letter of Consent Enclosed: ☒ Yes ☐ No

4. PRESENT USE: Weddings and special events

5. ORIGINAL USE: Church

6. OTHER PAST USES: Classrooms and event functions

7. YEAR OF CONSTRUCTION: Feb. 9, 1917

(a) Builder: R. J. Smith

(b) Architect: Father John J. Burri

8. CLASSIFICATION (Check appropriate spaces):

Category: ☒ Site (Historic) ☐ Site (Archaeological) ☐ Building(s)
☒ Structure(s) ☐ Object(s)
Ownership: ☒ Public ☐ Private ☐ Both
Status: ☐ Occupied ☒ Unoccupied
Accessibility: ☒ Yes: Restricted ☐ Yes: Unrestricted ☐ No
Condition: ☒ Good ☐ Fair ☐ Deteriorated ☐ Unexposed
☐ Demolished (just for site applications)

9. ARCHITECTURAL STYLE (for buildings & structures) Clapboard (frame building) with a vestry

10. IF ALTERED, PLEASE DESCRIBE: N/A

11. LEGAL PROPERTY DESCRIPTION: _____

Include approximate property size in feet:

(a) Frontage 26' (b) Depth 36" or Approximate Acreage and a Vestry of 10' x 12'

12. PHYSICAL APPEARANCE OF SITE/STRUCTURE:

☒ Excellent ☐ Good ☐ Fair ☐ Deteriorated

13. PRIMARY STRUCTURAL MATERIALS:

☐ Stone ☐ Adobe ☒ Wood ☐ Stucco ☐ Brick ☐ Other:

14. RELATED FEATURES OR OUTBUILDINGS (list here, describe in No. 15):
There is a patio area outside the chapel.

15. STATEMENT OF SIGNIFICANCE (please attach a 1-2 page statement):

Click **here** for assistance on "**How to Write a Statement of Significance**"
See Attached

16. ARCHITECTURAL DESCRIPTION (for buildings and structures):

Please attach your description on a separate page.

17. REFERENCES/BIBLIOGRAPHY:

Please attach separate page.

18. THREATS TO THE SITE (if any; use separate page if needed): None

19. PHOTOGRAGHS ENCLOSED: ☒ Yes ☐ NO

20. FORM PREPARED BY:

Name Joyce Hohenadl, 27 Corte Palazzo, Lake Elsinore, CA
Address _____ City _____ Zip 92532

Telephone(s) 951-674-2159

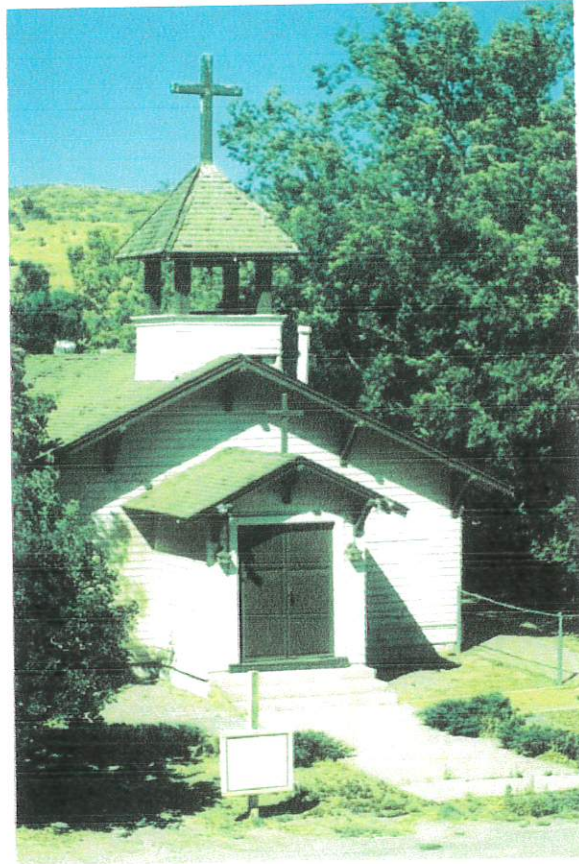
21. Organization: _____

Riverside County Historical Commission

Signature of Authorizing Official (s):

Joyce Hohenadl, Historical Commission

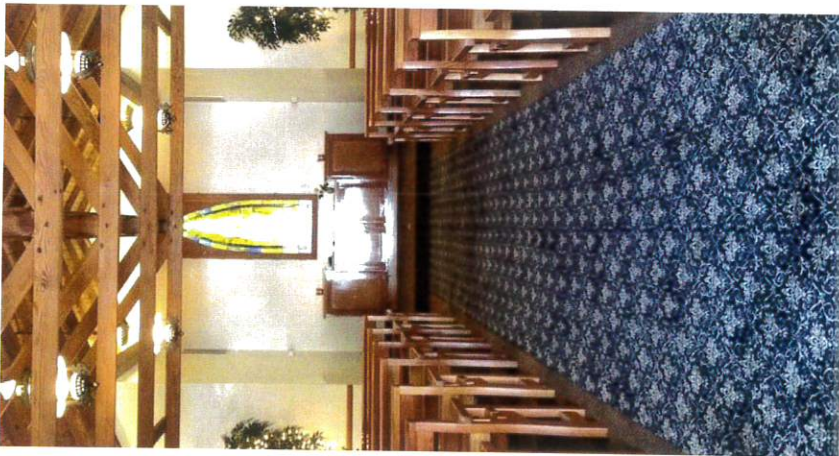
District 1



A Day to Remember...

The Chapel of Memories, a quaint and historic chapel, will give your wedding day the charm and uniqueness you desire. Conveniently located in the heart of Old Town Temecula in Sam Hicks Monument Park, the Chapel of Memories is a blend of vintage charm with a modern vibe. The beautiful open beam ceiling, wooden pews, which seat 100 guests, stained glass windows, and stunning altar combine to make your special day memorable.

An experienced wedding coordinator is on staff to make sure your wedding event goes smoothly.



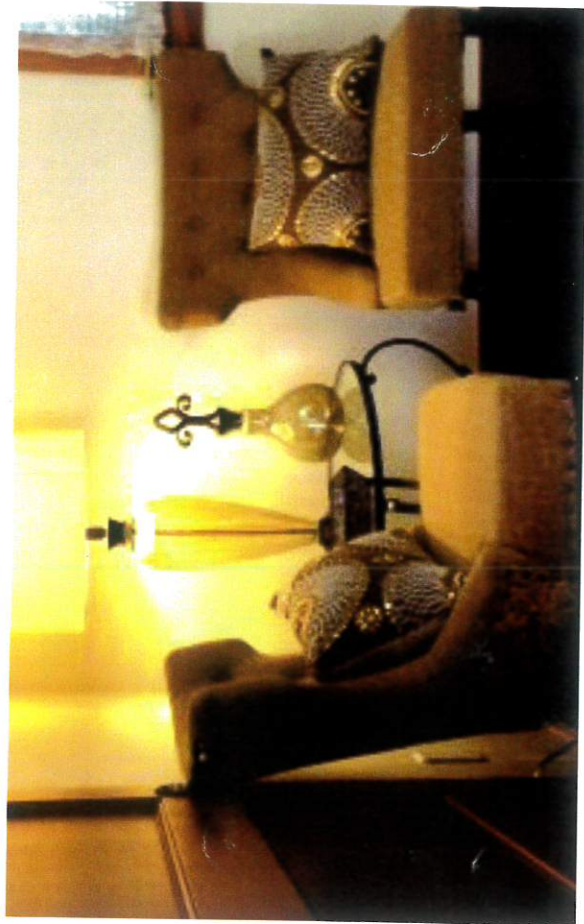
Reserve Your Date

Contact Pat Garcia,
Wedding Coordinator
Chapel of Memories.

Phone: 951-265-7720

Email: pat@chapelofmemories.org

A deposit is required to reserve your date.





Open inner door

Right wall of entry room as
seen from the outside





CATHOLIC CHURCH TEMECULA, CAL.



St. Catherine's Church, Temecula,

HISTORY OF CHAPEL

- In the early 1900's Temecula was a small railroad town with a large cattle ranch that employed and supported a significant portion of the community and a population of native Americans.
- In 1910, St. Catherine of Alexandria Catholic church began as a Mission church of the San Luis Rey Mission for the areas of San Jacinto, Lake Elsinore and Pala. The church was established as a mission-parish without an actual building. The priest traveled to Temecula for religious services.
- In the beginning, as the West Coast became more populated in the late 1800s and early 1900s, the need for a Catholic Church in Temecula became evident.... Worshipers were meeting in homes or at area missions in the Temecula Valley. It is estimated that Temecula may have had a population of 200 to 300 people at this time, and that about 50% of the population was Catholic.
- In 1916, The Temecula area priest said that the area needed a church, but money was an issue. The community's citizens pulled together to donate what money they could and volunteer labor, but they needed to take out a bank loan for the materials. When the bank wanted the loan repaid, a fundraiser was planned by the church community at Vail Ranch. [Bonnie will provide the details of the fund raiser next.]
- The Lake Elsinore Valley Press reported, "It is planned to build a Catholic church in Temecula and the businessmen generally think it will be a good thing for the town. Six town lots have been secured on the main boulevard near the beautiful new grammar school. Mac Machado, a popular public-spirited merchant, made a liberal donation on the price of two lots and the Santa Fe Railway Co. did likewise on the other four, so the new church is provided with six slightly building lots." It was located on the corner of Front and Sixth Streets.
- The parish priest at this time was Father John J. Burri. He informed the parishioners that the new structure would be "a frame building 26' x 36' with a sanctuary 12' x 12' and a vestry of 10' x 12'". He described the tabernacle and said that "the door of the tabernacle would be solid bronze highly polished with the chalice and host engraved on it. The church will have an open ceiling showing the framework of the roof constructed of finished lumber suitably stained and polished. The building and furnishings will cost about \$1,200".
- Construction of the church began on February 9, 1917 and was completed on March 30th, 1917. R. J. Smith was the contractor.
- The building's exterior was dark brown clapboard siding with an ochre-colored wood single gable roof with a steeple. The front steps were granite, quarried from the local hills. The original bell was a 200 plus years' old bell; the bell's origin is unknown. That bell was stolen in the late 1930's. The replacement was taken from a decommissioned Navy ship and was installed on Christmas Eve 1978. The bell in use today is computer generated sounds.

- This structure served the Catholic community for over 70 years. Even after the church added portable additions to serve the growing population, it was not enough. The community outgrew this little building and purchased land on C Street and Santiago for a new, larger church. This building was used for classrooms and administrative functions for a few years after the new church was completed. Eventually it was not being used and was to be destroyed for commercial growth on Front Street. But Tony and Mildred Tobin purchased the building for \$1 and donated it to the Temecula Museum Society.
- It had to be moved. In May of 1989, the building was picked up and trucked to this location. The renovations and paint were provided by a seven-woman crew from Banning Rehabilitation and Counseling Center. Stained glass windows were donated by Tony Tobin and fabricated by Stan Hansen. Mr. Tobin had purchased seven stained-glass windows from a 100-year old church in St. Joseph, MO.
- The building is still in use today. It is a wedding and special events chapel.



Bonnie Martland

Special to Valley News

Residents may have noticed a little chapel nestled amid the trees and shrubs in Sam Hicks Park in Old Town Temecula. The chapel is the first church in Temecula built to be a church, and on many weekends it still hosts beautiful weddings. It is the original St. Catherine's Catholic Church built in 1917. Though Old Town was built in the 1880s spurred by the coming of the Southern Pacific Railroad, the fact that the church was built in 1917 does not imply local citizens were not churchgoers before that date. Services were held in school buildings and other establishments.

A quaint white clapboard church with the traditional steeple, it sits a few steps down the walk from the "They Passed This Way Monument." Now known as the "Chapel of Memories," it is part of the Temecula Valley Museum and is used for weddings and special events. The chapel is celebrating its 100th anniversary this month. At 9 a.m. April 15, 1917, the opening Mass was held followed at noon by a "Free Barbecue ... for the benefit of the New Catholic Church in Temecula, California." The invitation encouraged participants to enjoy amusements from 10 a.m. to 10 p.m. including "Sports of all kinds, Dancing and Music." Admission was \$1. The barbecue was hosted at the Vail Ranch.

Originally, the church sat on Front Street where it served generations of Temecula citizens, including this writer. When we moved to Temecula in 1979, the chapel was our local church, and our youngest

son had his first communion there. At that time, Temecula had one elementary and one middle school, where my husband and I taught. The pastor at St. Catherine's often attended events at school, particularly eighth grade graduation ceremonies to celebrate with his parishioners.

Not long after our arrival, Temecula began to grow in leaps and bounds, and portable sections were added to the church to accommodate the growing parish. It soon became clear, however, that a new and much larger church would have to be built. Eventually, the original church was purchased by a local citizen who donated it to the museum, and the building moved to its current location.

An interesting aside is the idea of a barbecue to fund the church was supposedly generated by one of the more notorious characters in town – the proprietor of the Ramona Inn saloon. His establishment was infamous for the shooting between two young men of prominent local families and the killing of the town constable on Christmas Eve 1907. He was also well-known for his disregard of legislation prohibiting the sale of liquor when Temecula was part of a dry county.

He was also the likely culprit stealing wood from the local mercantile store, now known as the Merc, causing the store owner to exact revenge by hollowing out a wood piece and inserting black gunpowder. The purloined wood had been regularly placed in the pot belly stove at the local livery stable. The altered wood was indeed picked up and chucked into the stove causing an explosion that proved the demise of the livery building, but luckily the explosion hurt none of the inhabitants. The quip was probably the only time the noted gentleman attended the church was for his own funeral.

The Temecula Valley Museum will be hosting a 100th anniversary celebration April 15 with a barbecue, music, cake, crafts and celebration at Sam Hicks Park of course, and like 100 years ago, the cost will be \$1.

ELSINORE'S HOT MINERAL SPRINGS AND BATH HOUSES ARE SECOND TO NONE IN CALIFORNIA

Lake Elsinore Valley Press

12th YEAR

ELKHART, RIVERSIDE COUNTY, CALIFORNIA

December 8, 1916

News

Catholic Church for Temecula

A meeting of businessmen was held in the Bank hall at Temecula Monday night, Dec. 4. Mr. Shumate, cashier of the Temecula bank, was chairman. There were present Rev. J. J. Burri, August Cantarini, Mr. Barnett, Mac Machado and other prominent citizens. It was the third meeting that has been held.

It is planned to build a Catholic church in Temecula and the businessmen generally think it will be a good thing for the town. Six town lots have been secured on the main boulevard near the beautiful new grammar school. Mac Machado, a popular public spirited merchant, made a liberal donation on the price of two lots and the Santa Fe Ry. Co. did likewise on the other four, so the new church is provided with six slightly building lots.

Rev. J. J. Burri has been very successful in raising funds. If built of stone, the stone will be donated and if parties can be induced to donate the hauling, it will be possible to build a church valued at \$3,000 to \$4,000. If a wood frame church be decided upon, a frame structure to cost about \$1500 will be erected.

Five hundred dollars cash has been donated through the Catholic Church Extension Society of Chicago. An altar from the same source has been donated. The society secured the money from a wealthy gentleman in the east. The Diocese of the Catholic Church of Southern California purchased the lots. Towards the building fund \$500 is promised, but it is hoped that the total will be much greater. Work will begin very soon and the new church will be completed early in January.

Temecula is certainly coming to the front. In the past year a fine new two-story concrete bank building was erected. The new bank is in a very prosperous condition. A beautiful new grammar school has been opened and now it is proposed to build a handsome church.

Temecula's New Church

Father Burri's Congregation to Build Edifice to Cost over Twelve Hundred

February 9, 1917

Rev. J. J. Burri announced last Sunday that work would begin Wednesday on the new Catholic Church in Temecula. It will be a frame building 26 X 36 feet. The addition will consist of a sanctuary 12 X 12 feet and a vestry 10 X 12 feet.

B. J. Smith of Elsinore will be superintendent of building and it is hoped the building will be finished in time to be dedicated on St. Patrick's Day.

Jean Laborde of Perris will furnish the granite for the altar seven feet wide.



St. Catherine's old church building, built in the early 1920s, was moved to Sam Hicks Monument Park early Tuesday morning.

The building will become part of the Old Town Temecula Museum complex to be built at the park.

Future town museum on the move

□ St. Catherine's Church gets moved to its new home where it will serve as part of the Old Town Museum

RICHARD SPARKS/Staff writer

A landmark at Sixth and Front streets for decades, the old St. Catherine's church building was

relocated early Tuesday morning, culminating a two-year effort by the Old Town Temecula Museum.

Destined to become an integral part of a new museum complex, the venerable church now sits on a trailer at Sam Hicks Monument Park on Moreno Road, waiting for the foundation to be built that will become its new home.

Nearly 70 years ago, a Catholic priest from Pala conceived the

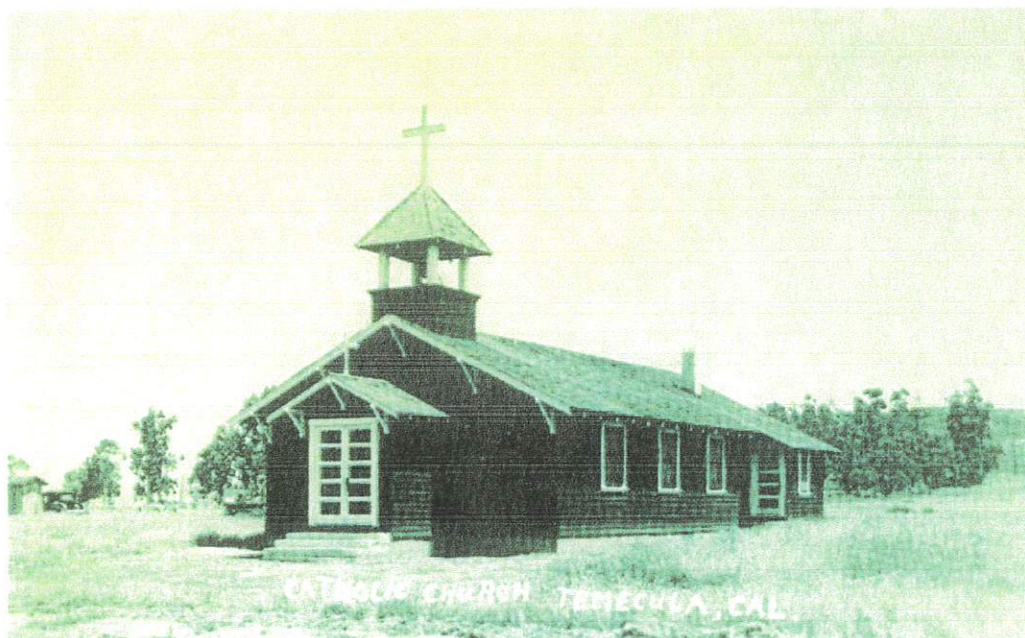
idea to build a church in Temecula. A big barbecue was held to raise the needed funds, complete with beer, winners and a steer donated by Mahlon Vail.

The event was highlighted by an athletic program, feminine entertainment from local cafes and professional gamblers sent from a "blind pig" saloon in Oceanside. The barbecue fund-raiser proved a success, with the gambling concession furnishing enough extra

money to provide the priest with an automobile to go with his new church.

Serving as an extension of the San Luis Rey Mission, the little church hosted Sunday morning services until a new meeting hall was built in the late 1950's. After that, the church building was used for meetings and Sunday school classes.

See MUSEUM, page A2 ►





City of Temecula

City Council/City Manager

41000 Main Street • Temecula, CA 92590

Phone (951) 694-6444 • TemeculaCA.gov

September 8, 2021

Joyce Hohenadl
Historical Commissioner, District One
Riverside County Historical Commission
c/o Bonnie Hayosh
36240 Breitner Way
Winchester, CA 92596

Dear Ms. Hohenadl:

The City of Temecula approves the Riverside County Historical Commission's request to place a Riverside County historical marker as detailed below inside the vestibule of the Chapel of Memories at 28300 Mercedes Street, Temecula, CA 92590.

The marker will be 12 x 12 in style of a house with light granite and black lettering. The commission will pay \$550.00 for a standard marker. The City of Temecula Public Works staff will install the marker. The wording on the marker will be as follows:

ST. CATHERINE'S CATHOLIC CHURCH

1917-1989

THE FIRST BUILDING IN TEMECULA
ACTUALLY BUILT AS A CHURCH

APPROVED BY THE COUNTY OF RIVERSIDE
BOARD OF SUPERVISORS (To be determined)

DEDICATED BY THE HISTORICAL COMMISSION
(To be determined)

The City of Temecula is committed to honoring our historic past, and supports the commission's mission to preserve our area's history for future generations.

With regards,

Aaron Adams
City Manager



Riverside County Regional Park and Open-Space District


Kyla Brown, Parks Director / General Manager

HISTORICAL COMMISSION MEETING

DATE: SEPTEMBER 21, 2023

AGENDA ITEM NO.: 7.2

PROPOSED PROJECT

<i>Case Number</i>	HC-2023-002
<i>Request</i>	To Consider A Riverside County Historic District for the March Weapons Storage Area (WSA)
<i>Applicant</i>	Mike McCarthy, Riverside Neighbors Opposing Warehouses (R-NOW)
<i>Nomination Location</i>	<p>Located on APNs 297-090-001, 297-090-010, and 297-090-021 in District 1. South of Alessandro Boulevard along Vista Grande Drive – north of Orangecrest neighborhood, east of Mission Grove neighborhood and Barton Road, west of Meridian Parkway.</p>  An aerial photograph showing a large, irregularly shaped area of land. The land is mostly green with some brown patches, indicating vegetation and possibly some buildings or structures. The area is bounded by roads and other land parcels.
<i>Historic District</i>	Not Applicable
<i>Historic Designation</i>	Not Applicable
<i>Staff</i>	Dr. Bridget Lawlor, Historic Preservation Officer 951-529-2361 blawlor@rivco.org



RECOMMENDATIONS

Staff recommends that the Historic Commission:

1. **CONTINUE** this item to an undetermined Historical Commission Meeting to allow the applicant additional time to provide all applicable items required to establish a new historic preservation district as required by Riverside County Ordinance 578, Section 2.1A

BACKGROUND/DISCUSSION

A Historic Landmark Nomination Form was submitted by Mr. Mike McCarthy from to consider a Riverside County Historic District for the March Weapons Storage Area (WSA) located on (APNs 297-090-001, 297-090-010, and 297-090-021). As stated in the applicants Statement of Significance, “The March Weapons Storage Area (WSA), also known as ‘the bomb dump’ and ‘munitions storage area’ is a cluster of [approximately] 20 buildings located on the West March campus...constructed from 1948-1962 as part of the March Air Force Base mission as part of the Strategic Air Comman.”

Due to a lack of proper information and direction included in the Riverside County Regional Park and Open Space District website on the historic district nomination process, Parks Staff requires additional time to work with the applicant. Riverside County Ordinance 578 governs the establishment of historic preservation districts and regulates activities therein. Section 2.1A of this ordinance states:

“Any person or local governmental entity may request the establishment of a Historic Preservation District by submitting a District Application to the General Manager and accompanied by the filing fee set forth in County Ordinance No. 671 [Fees For Land Use and Related Functions]. The District Application shall clearly define the boundaries of the proposed Historic Preservation District, describe the historical significance of the area and include a copy of the applicable Historic Resources Survey.”

Prepared by: Dr. Bridget Lawlor, Historic Preservation Officer

Reviewed by: Gaby Adame, Bureau Chief of Planning, Development, and Interpretation